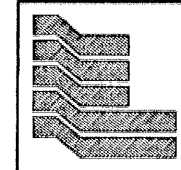
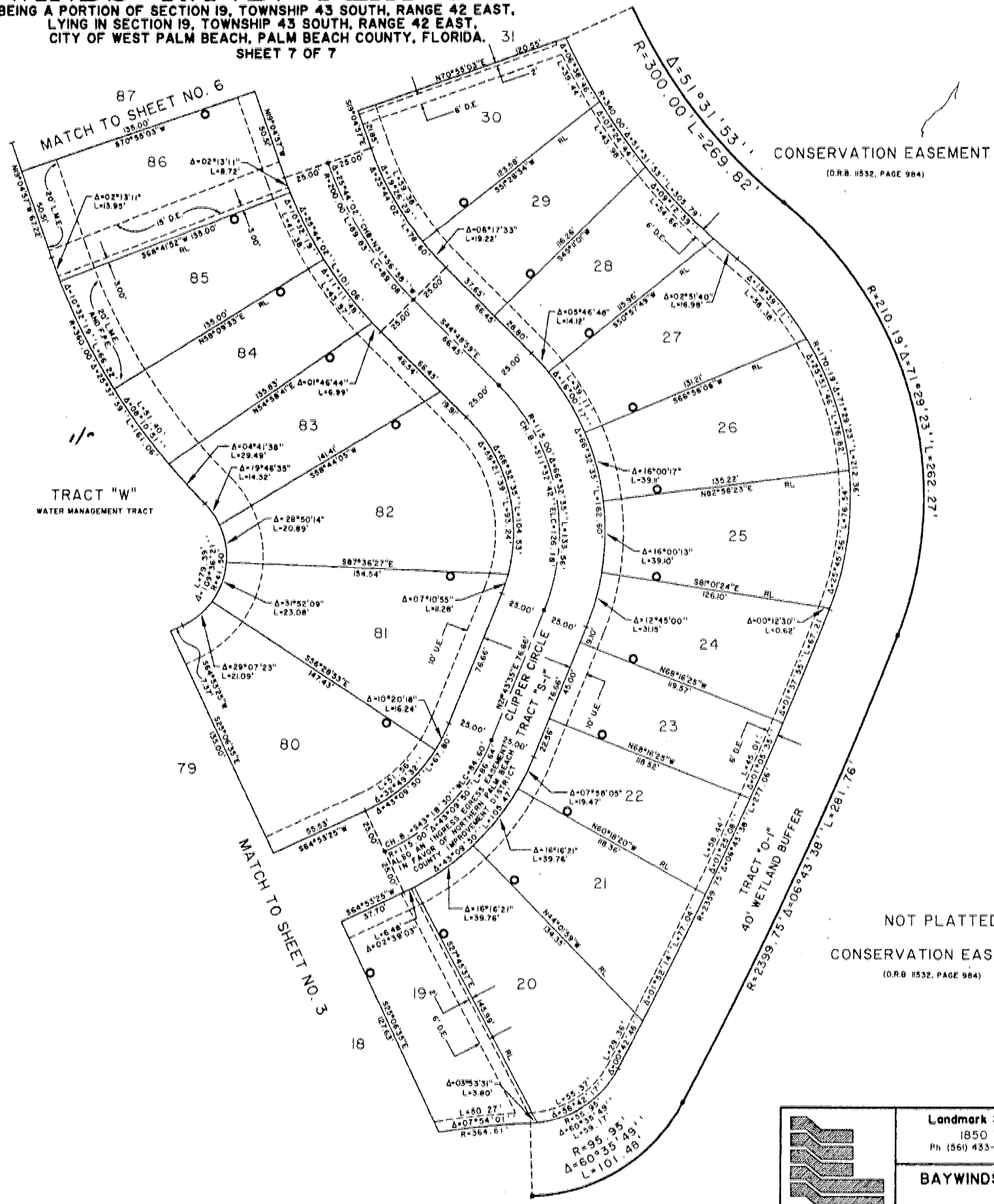
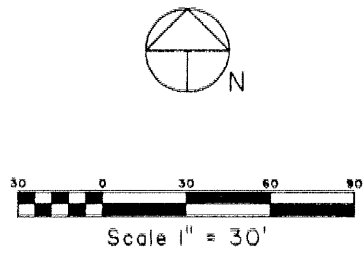
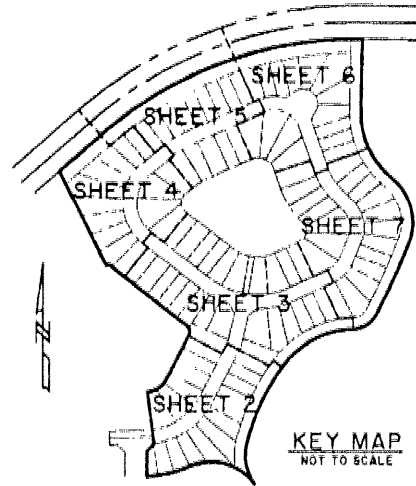


BAYWINDS R.P.D. PLAT NO. 4

BEING A PORTION OF SECTION 19, TOWNSHIP 43 SOUTH, RANGE 42 EAST,
 LYING IN SECTION 19, TOWNSHIP 43 SOUTH, RANGE 42 EAST,
 CITY OF WEST PALM BEACH, PALM BEACH COUNTY, FLORIDA.
 SHEET 7 OF 7

188

STATE OF FLORIDA
 COUNTY OF PALM BEACH
 THIS PLAT WAS FILED FOR RECORD AT _____
 M. TIME _____ DAY OF _____ 2001
 AND DAILY RECORDED IN PLAT BOOK NO. _____
 ON PAGE _____
 DOROTHY H. WARREN, CLERK OF THE CIRCUIT COURT
 BY _____ D.C.



Landmark Surveying & Mapping Inc.
 1850 Forest Hill Boulevard
 Ph (561) 433-6405 Suite 100 W.P.B. Florida
 LB # 4396

BAYWINDS R.P.D. PLAT NO. 4
 (TRACT C)